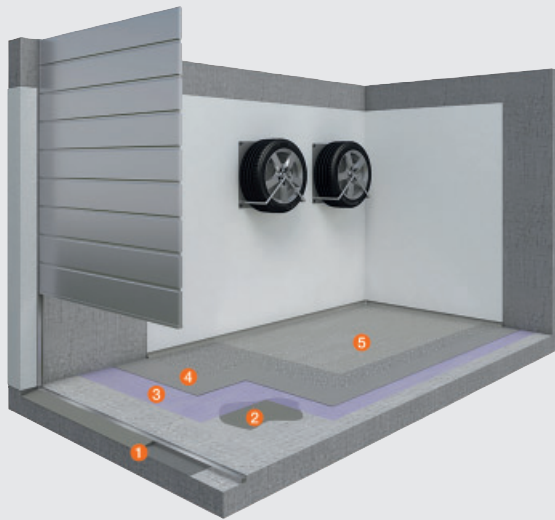


System II for Garage Refurbishment

PCI system solutions for refurbishing and improving the appearance of old garages without the use of reaction resins



Brief description:

PCI system solutions for floor refurbishment of garages

Garages are continually subject to extreme stress. Not only mechanical loads, with high point loads caused by vehicles entering and leaving, but also heat, frost, water, moisture, deicing salt and oil deposits attack the structure of the floor surface over the course of time. As a result of the wide variety of stresses, the screed or the exposed concrete floor releases sand; chips and holes appear in the concrete. Refurbishment then becomes essential. This damage can be fully repaired and avoided in the long term. A system without resin-based products has the advantage of being simple, quick, can be processed by anyone and provides optimal basic protection.

System benefits:

- Value maintenance
- Prevention of damage
- Durable refurbishment

Worksteps	Products
Floor/wall leveler	1 PCI Nanocret® R4 PCC Heavy-duty repair mortar for concrete structures on floors, walls and overhead application
Repair mortar	2 PCI Repafast® Fluid Flowable repair mortar for traffic areas and industrial floors
Coating	3 PCI Gisogrund® 404 Wash primer for absorbent and non-absorbent substrates 4 PCI Zemtec® Outdoor Cement-based coating for residential and commercial buildings in addition (optional) PCI Farbchips 05 Polymer-modified coloured chips for scattering on floor coatings
Impregnation	5 PCI Zemtec® Protect Aqueous silicate impregnation, 2 components for mineral floors

Replacement of threshold screed rail

Insertion of screed rail

The new rail is fixed in place using dowels for perfect seating.

Grouting of screed rail

The rail is grouted using PCI Repafast Fluid flowable repair mortar.

Leveling of screed rail

Deeper holes are filled using PCI Nanocret R4 PCC. The threshold area is leveled.

Repairing the driveway area

An inclined ramp produced on the outside with PCI Nanocret R4 PCC helps to bridge height differences of up to 50 mm and protects the rail from impact loads.



A screed rail is grouted using a flowable mortar



Alternatively, the area may be leveled



Height offset entrance rail

Coating – preparation of substrate

Grinding the floor

An optimum substrate preparation is achieved by grinding with a disc sander. Old residues and foreign matter that could impair adhesion are removed which significantly improves the absorption of the primer. If the floor is severely contaminated by oil, it will need to be milled down or treated using PCI Entöler oil remover.

Corners and connections

A concrete grinder must be used for work on inaccessible areas such as corners.

Vacuuming

The floor must then be cleaned using an industrial vacuum cleaner.

Priming

Two coats of PCI Gisogrund 404 (applied cross-wise) ensure good adhesion of the leveling compound to the substrate. The violet coloring of the product means that it is easy to see which areas have already been covered. The primer is diluted with water depending on the substrate.



Grinding the floor



Corners and connections

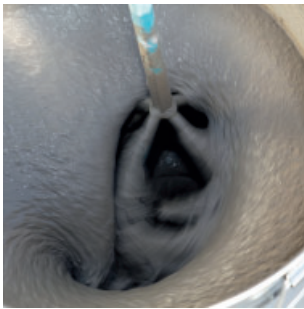


Vacuum cleaning



Priming

Coating – cementitious leveling compound



Stirring without lumps



Distribution of leveling compound



De-aeration

PCI Zemtec Outdoor is the ideal floor leveling compound for perfect results without sealing:

- Self-leveling
- For direct use also outdoors
- Resistant to weather conditions and frost / de-icing salt
- High abrasion resistance
- Suitable for use by vehicles with pneumatic and solid rubber tires

Coating – surface protection

Installation of concave molding

Use PCI Nanocret R4 PCC to make a concave molding for the wall connection.

Impregnation

No primer is required before applying the transparent, solvent-free, very low-emission impregnation PCI Zemtec Protect. PCI Zemtec Protect is applied onto the cured PCI Zemtec Outdoor and cured PCI Nanocret R4 PCC. Please wear appropriate work and protective clothing when working with the impregnation!

The technical process of refurbishment has been completed when two coats of PCI Supracolor have been applied.

Stirring without lumps

Stir the product with a suitable agitator or mixer (basket mixer) for at least 2 minutes until there are no lumps in the mixture. Allow mixed PCI Zemtec Outdoor to stand for about 1 minute and then stir it again for a short time.

Distribution of coating

Distribute the coating evenly on the primed surface. It is recommended to use a pin leveler.

De-aeration

The cementitious floor leveling compound should be de-aerated using a spiked roller. This process removes air bubbles from the leveling compound and creates a homogeneous surface.

Visual appearance

Immediately after installing and venting PCI Zemtec Outdoor, PCI Farbchips color chips can be sprinkled into the fresh, not yet dried leveling layer for an appealing look.

Note

Ideally, the color chips are distributed, vented and, if necessary, scattered in stages. To do this, work in approx. 1.5 m wide strips from back to front in the garage. After spreading, ventilate each strip immediately (and sprinkle in color chips). Then the next strip. It is not recommended to walk on the prepared area with spiked shoes.



Installation of concave molding

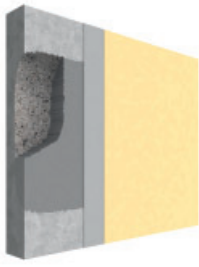


Impregnation

The floor is prepared, protected and has anti-slip properties (slip resistance class R10).

Overview of Construction Systems

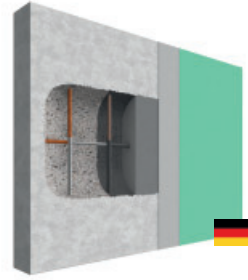
System for Concrete and
Masonry Refurbishment



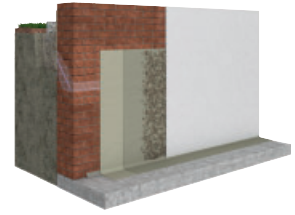
System for Concrete
Repair



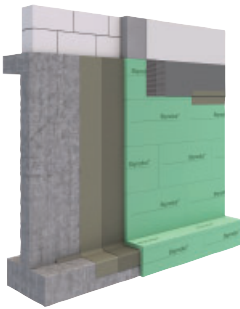
System for Structural
Repair (PCC)



System Barra



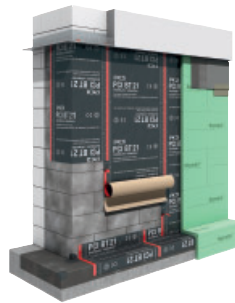
System Barraseal Turbo



System Pecimor



System BT 21



System for Double-Leaf
Brickwork



www.pci-augsburg.de

The specifications in the valid technical data sheets are to be followed for the use of the PCI products mentioned.

System II for Garage Refurbishment, edition May 2024.
Any subsequent publication supersedes this edition; the latest edition is always available on the Internet under www.pci-augsburg.de



PCI Augsburg GmbH

Piccardstr. 11
86159 Augsburg
P.O.B. 10 22 47
86012 Augsburg
Germany

Tel. +49 (821) 59 01-0
Fax +49 (821) 59 01-372
www.pci-augsburg.de



zertifiziertes Qualitäts-
managementsystem