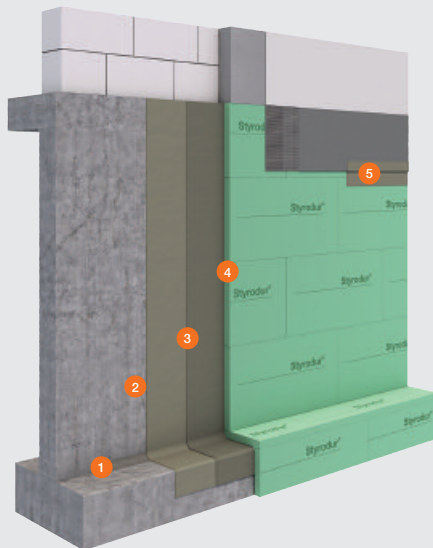


System Waterproofing of Buildings PCI Barraseal® Turbo

System for waterproofing buildings in accordance with DIN 18533 W1 and W4 with flexible mineral waterproofing slurries



Brief description:

The **PCI Barraseal® Turbo waterproofing system for buildings** is a professional system for waterproofing building elements in contact with the soil using a flexible mineral waterproofing slurry in accordance with DIN 18533, W1 and W4, and for providing protection against pressing water, with the general approval certificate of the construction authorities. Flexible mineral waterproofing slurries are easy to apply, set rapidly and can also be used for bonding insulating boards. In addition, this waterproofing membrane can be continued above ground level. The waterproofing slurry can be covered with coatings or render.

System benefits:

- Only one product for waterproofing wall areas and foundation walls
- Provides protection against pressing and non-pressing water
- Can be covered with mineral products

Worksteps	Products
Waterproofing / concave moulding	1 PCI Polyfix® plus Quick setting cement mortar for quick repairs in above and below ground situations
Primer optionally contact layer	2 PCI Gisogrund® 404 Wash primer for absorbent and non-absorbent substrates
Surface waterproofing (W1)	3 PCI Barraseal® Turbo Flexible mineral waterproofing slurry for external basement walls, foundations and concrete elements to be applied in 2 layers
Insulation board adhesive	4 PCI Barraseal® Turbo Flexible mineral waterproofing slurry for external basement walls, foundations and concrete elements
Waterproofing of foundation wall	5 PCI Barraseal® Turbo Flexible mineral waterproofing slurry for external basement walls, foundations and concrete elements

Waterproofing basements in accordance with DIN 18533 using flexible mineral waterproofing slurries

In connection with the new waterproofing standard DIN 18533, flexible mineral waterproofing slurries are becoming increasingly important. They can now also be used for protection against non-pressing water in accordance with the standard. A special agreement concerning the use of flexible mineral waterproofing slurries is only required in the

case of pressing water. DIN 18533 also recommends the use of flexible mineral waterproofing slurries for waterproofing under walls. The flexible mineral waterproofing slurry system therefore covers a wide variety of applications with only one waterproofing product.

Areas of application of PCI Barraseal® Turbo in accordance with DIN 18533:

Waterproofing of wall surfaces (DIN 18533 W1)

The new waterproofing standard for buildings, DIN 18533, allows the use of flexible mineral waterproofing slurries for water exposure class W1. This provides contractors with legal security for the acceptance of construction services but also allows greater leeway in product selection. In addition, PCI Barraseal® Turbo adheres to almost all old waterproofing layers and is therefore ideal for refurbishment work. PCI Barraseal® Turbo is fast-setting. Construction times are reduced as the trench can be filled rapidly (after about 6 hours), even in poor conditions.



Waterproofing of basement walls (DIN 18533 W4)

This product has a wide range of applications, which makes planning easy. It can also be applied above ground level, which is important if the precise backfilling level has not been defined. PCI Barraseal® Turbo withstands ultraviolet light, is weather-resistant and can also be painted over or covered with render. This provides greater security for planning and ensures customer satisfaction in connection with waterproofing around ground level or with the subsequent application of mineral products.



Waterproofing under walls (DIN 18533 W4)

In accordance with the latest waterproofing standard, flexible mineral waterproofing slurries are to be preferred for waterproofing under walls. Vertical waterproofing can be reliably connected to the product and an overlap of 10 cm ensures absolute water-tightness.

PCI Barraseal® Turbo remains stable under pressure and is also suitable for use under walls with soil pressure from the side.



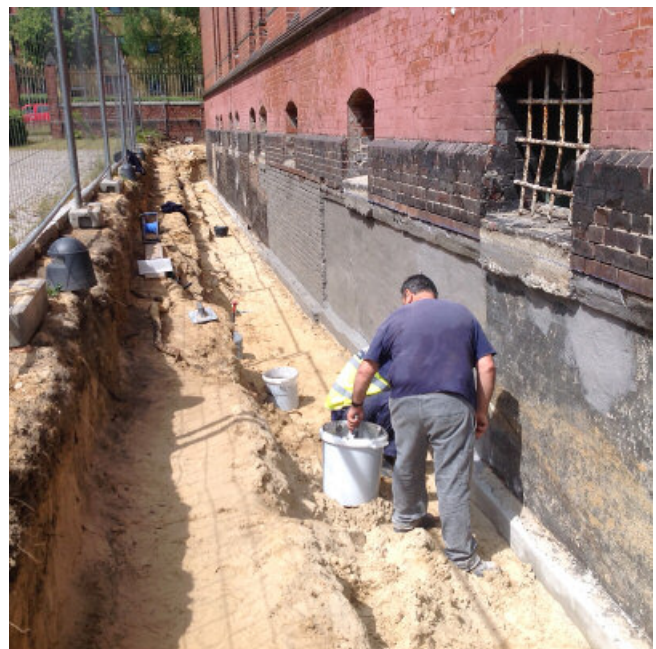
Additional benefits of PCI Barraseal® Turbo

PCI Barraseal® Turbo is highly reactive

- This waterproofing slurry can also be used on moist substrates. The curing time depends on temperature.
- The trench can also be backfilled rapidly (after about 6 hours). The product is already rain-proof after about 4 hours.
- The waterproofing slurry is suitable for bonding insulating boards.
- The reactive properties of the product mean that it also ensures adhesion to old waterproofing layers.
- The waterproofing slurry is outstandingly well-suited for joints with full-length windows.
- The waterproofing slurry resists chloride penetration and is approved for the protection of concrete surfaces in accordance with OS 5b.



PCI Barraseal® Turbo reactive waterproofing on old waterproofing layers



System Waterproofing of Buildings PCI Barraseal® Turbo



Joint with full-length window using PCI Barraseal® Turbo



PCI Barraseal® Turbo for waterproofing wall surfaces

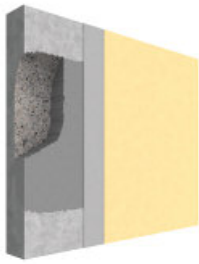


Protection of concrete surfaces in accordance with OS 5b with PCI Barraseal® Turbo



Overview of Construction Systems

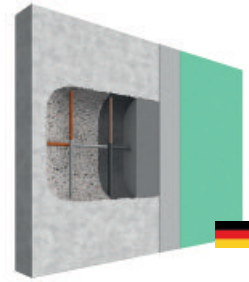
System for Concrete and
Masonry Refurbishment



System for Concrete
Repair



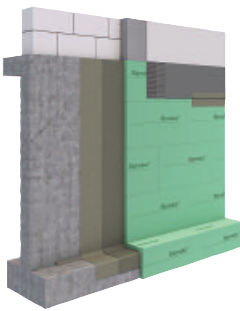
System for Structural
Repair (PCC)



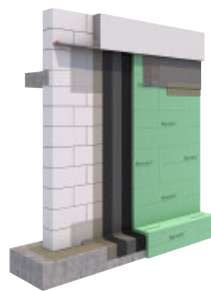
System Barra



System Barraseal Turbo



System Pecimor



System BT 21



System for Double-Leaf
Brickwork



www.pci-augsburg.de

The specifications in the valid technical data sheets are to be followed for the use of the PCI products mentioned.

System Waterproofing of Buildings PCI Barraseal® Turbo, edition September 2020 (German edition November 2019)

Any subsequent publication supersedes this edition; the latest edition is always available on the Internet under www.pci-augsburg.de



PCI Augsburg GmbH

Piccardstr. 11
86159 Augsburg
P.O.B. 10 22 47
86012 Augsburg
Germany

Tel. +49 (821) 59 01-0

Fax +49 (821) 59 01-372

www.pci-augsburg.de



zertifiziertes Qualitäts-
managementsystem